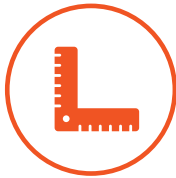




Warehouse North



\$ per SF/mo.
7.00_{NNN}



Square Feet
12,256



Restroom
YES



Parking Spaces
20



Drive-in Access
YES



Dock Doors
4



Warehousing . Production

English Avenue Yards offers the closest warehouse space to Georgia Tech and the World Congress Center. The warehouse space is shared with another tenant and is 18ft clear with 30x30 column spacing and a 1000sq ft. secured fenced in area. The access is by way of 4 dock doors and drive-in.

Location Highlights

1. Warehousing & Production

Wide open space perfect for storage and distribution with 18' ceilings, sealed concrete floors, security alarm, industrial lighting, interior restroom and dock access.

2. Dynamic West Midtown

Great location off Northside Drive, minutes from Georgia Tech.

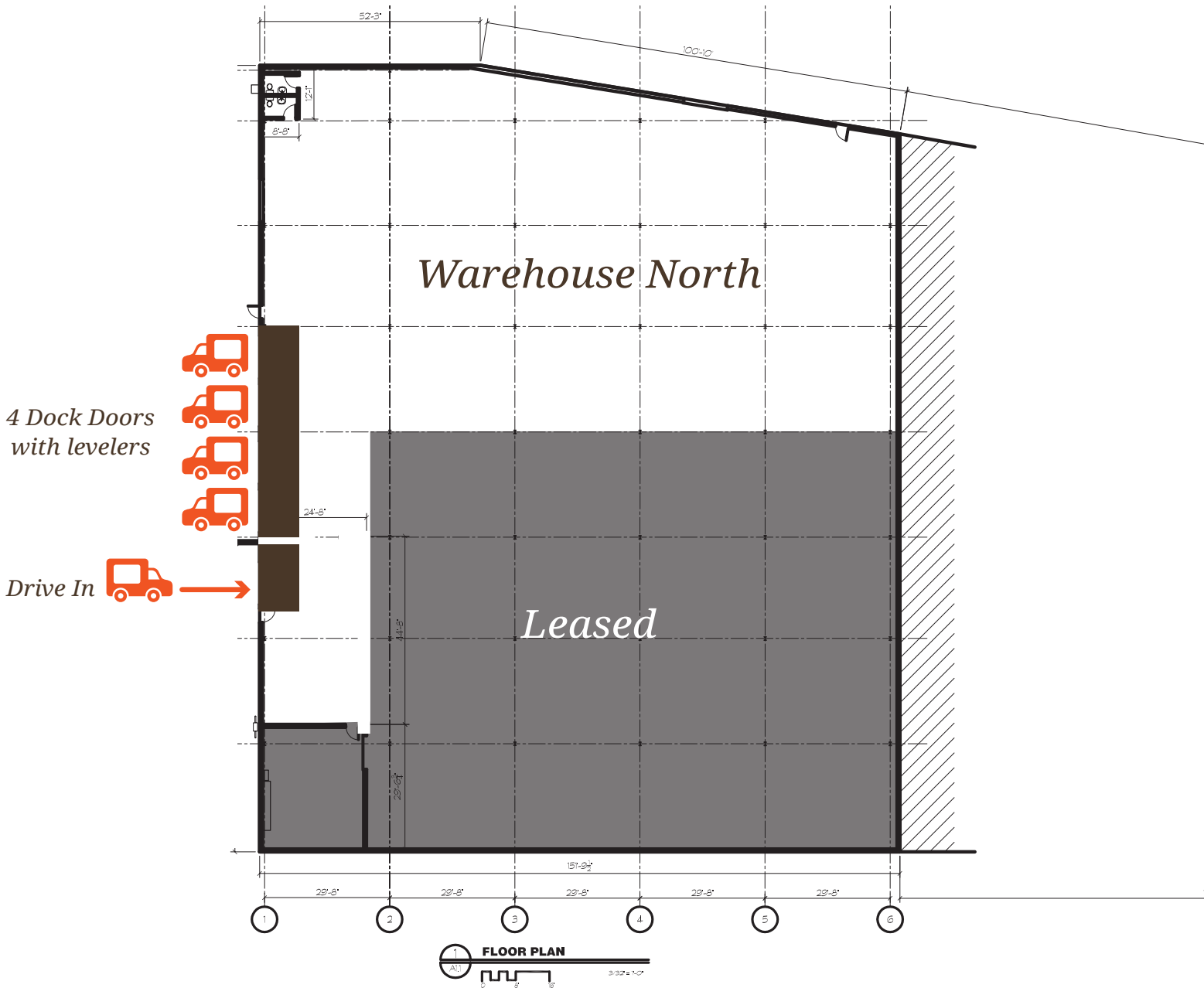
3. A fun hub

Ideal for designers, artists, movie production, technology businesses, and companies that need to tinker.

4. Great value

Monthly rent includes all common area maintenance charges and utilities, except electricity and gas.

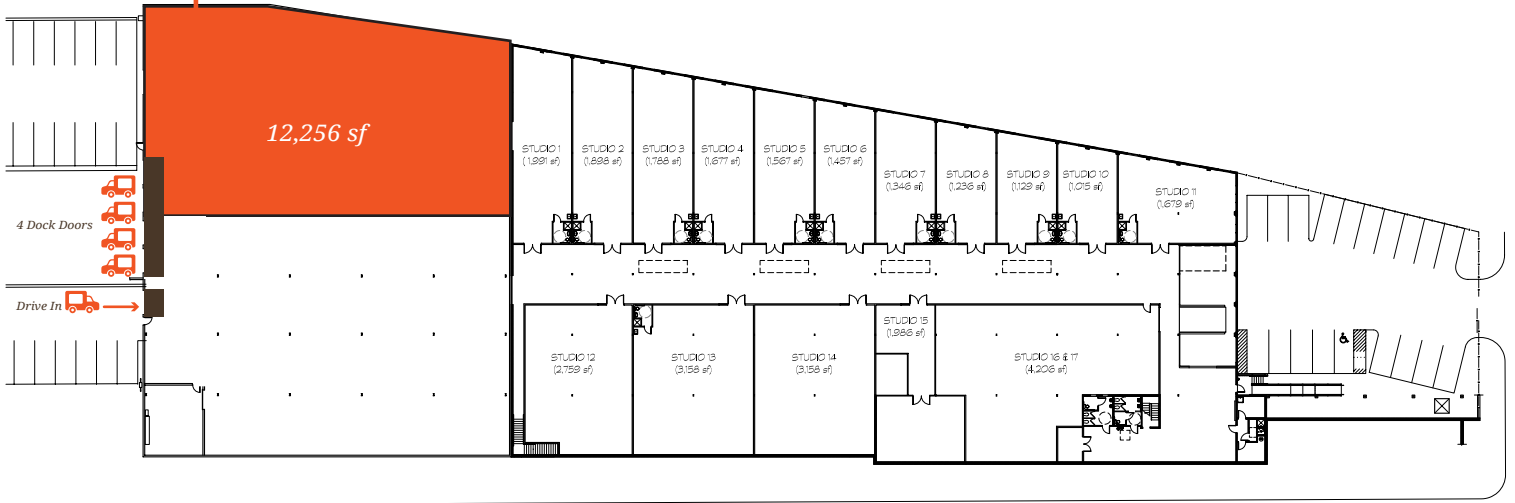




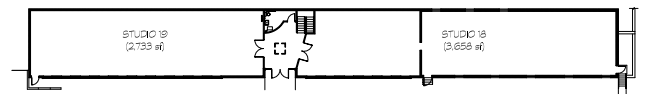
Warehouse North
Where creativity comes to work



Warehouse North



WHEELER ST.



JAMES P. BRAWLEY BLVD.



English Avenue Yards Floorplan

Where creativity comes to work